



## XINGTAI THINK-TANK RESEARCH REPORT

2025

3

142

0551-63759985

[xtresearch@xtkg.com](mailto:xtresearch@xtkg.com)

<http://www.xtkg.com/>

G3 C 902

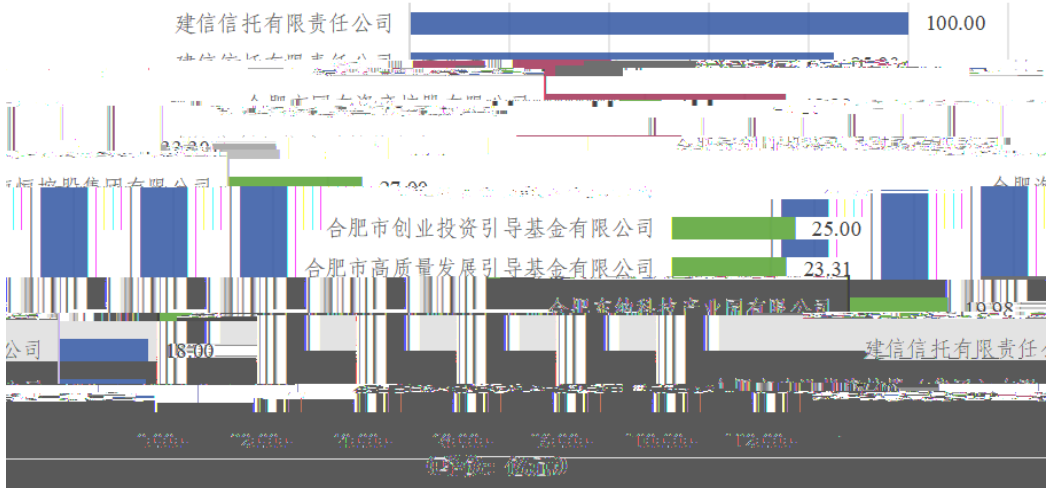





---

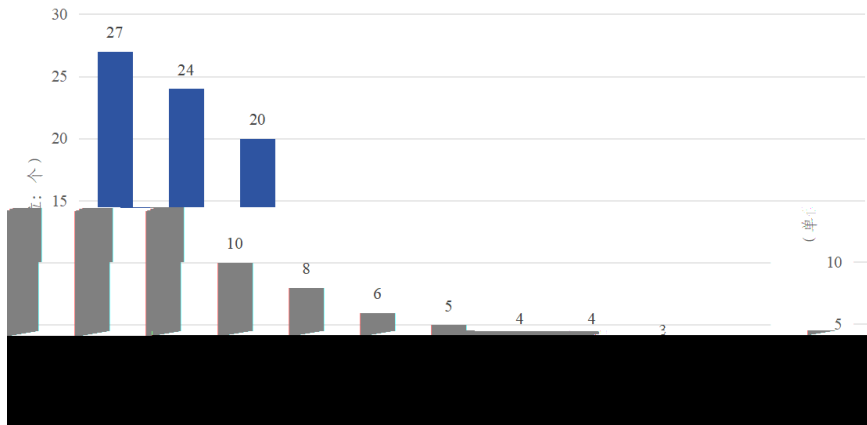
LP	13.1%	2.4		2022
2023				
2024	LP			
15	255.69		LP	22.3%
			" "	
		12	5.71	
			10	
73.09		LP	6.4%	

		<b>1 2024</b>	<b>LP</b>	
				LP
" "		100	"	
	"		85	"
	"			
397.30				
2024	LP			



**2 2024 LP**

2/3	2024	113	774.00
32.6%	39.1%	2023	37.9%
182	46.7%	2023	1453.14
	39.3%		LP
<b>200</b>			<b>LP</b>
			General Partner
GP	2023	7	
			LP
			22
91	<b>27</b>	<b>24</b>	<b>20</b>
	<b>14</b>	<b>15</b>	<b>7</b>



**3 2024**



## 2024

						2024
		373	2023		32.55%	
			-35.88%		-34.90%	
-37.07%					<b>2024</b>	
		373			63	
26					108	
	1400			20		
		1.56%				
	20	A	1.1	B	2	Pre-IPO
	16.5		7.5	B		



3 2023 2024

	2024		2023	
	8	2.14%	24	4.34%
	81	21.72%	139	25.14%
A	120	32.17%	177	32.01%
B	44	11.80%	59	10.67%
C	7	1.88%	23	4.16%
D	3	0.80%	5	0.90%
E	1	0.27%	2	0.36%
Pre-IPO	1	0.27%	0	0.00%
	8	2.14%	7	1.27%
	100	26.81%	117	21.16%
	373	100%	553	100%

2024

107

37

33

47

2023

70

35

2024

12





2024

A

3

2024

A

2023

313

100

68.05%

4

8

4

A

3

1

A

A

5 2024

A

2021 19

4

2025 1

LP



AIC

AIC AMC

" + "

2024

A 2024 395

CVC

"

"

S

2016 8

“ ”

“

”